

Human CD3E&CD3G/CD3 epsilon&CD3 gamma Protein

Cat. No. CD3-HM157

Description

Source	Recombinant Human CD3E&CD3G/CD3 epsilon&CD3 gamma Protein is expressed from HEK293 with His tag at the C-Terminus. It contains Asp23-Asp126 (CD3E) & Gln23-Ser116 (CD3G).
Accession	P07766(CD3E)&P09693(CD3G)
Molecular Weight	The protein has a predicted MW of 17.9 kDa (CD3E) and 17.9 kDa (CD3G). Due to glycosylation, the protein migrates to 25-40 kDa based on Bis-Tris PAGE result.
Endotoxin	Less than 1 EU per µg by the LAL method.
Purity	>95% as determined by Bis-Tris PAGE >95% as determined by HPLC

Formulation and Storage

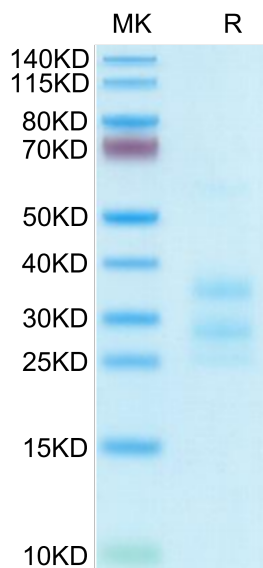
Formulation	Lyophilized from 0.22 µm filtered solution in PBS (pH 7.4). Normally 8% trehalose is added as protectant before lyophilization.
Reconstitution	Centrifuge the tube before opening. Reconstituting to a concentration more than 100 µg/ml is recommended. Dissolve the lyophilized protein in distilled water.
Storage	-20 to -80°C for 12 months as supplied from date of receipt. -80°C for 3 months after reconstitution. Recommend to aliquot the protein into smaller quantities for optimal storage. Please minimize freeze-thaw cycles.

Background

T-cell surface glycoprotein CD3 epsilon&CD3 gamma chain, also known as CD3E & CD3G, are single-pass type I membrane proteins. When antigen presenting cells (APCs) activate T-cell receptor (TCR), TCR-mediated signals are transmitted across the cell membrane by the CD3 chains CD3D, CD3E, CD3G and CD3Z. All CD3 chains contain immunoreceptor tyrosine-based activation motifs (ITAMs) in their cytoplasmic domain.

Assay Data

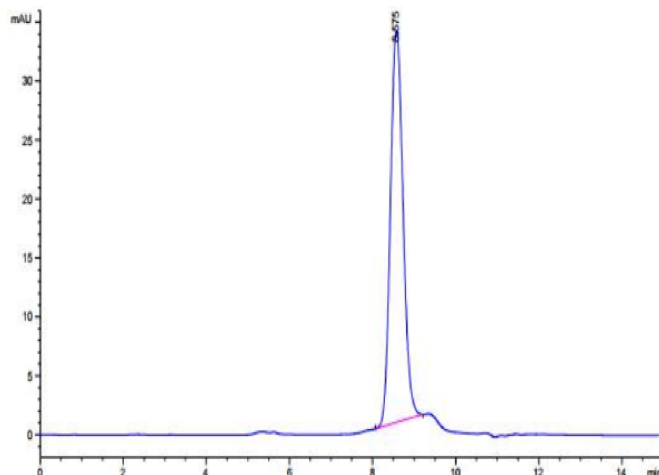
Bis-Tris PAGE



Human CD3E&CD3G on Bis-Tris PAGE under reduced condition. The purity is greater than 95%.

SEC-HPLC

Assay Data

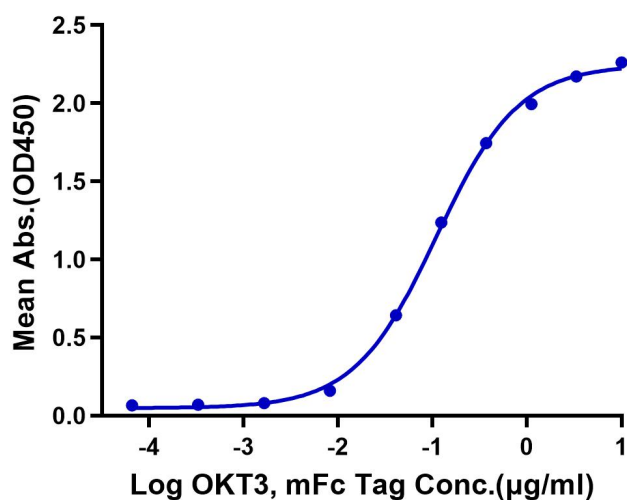


The purity of Human CD3E&CD3G is greater than 95% as determined by SEC-HPLC.

ELISA Data

Human CD3E&CD3G, His Tag ELISA

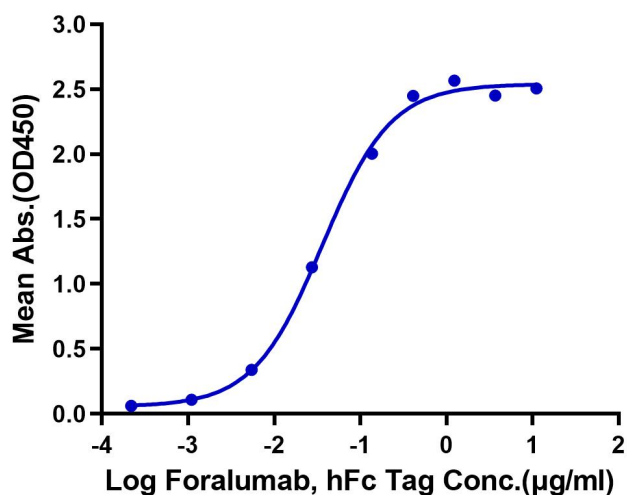
0.2µg Human CD3E&CD3G, His Tag Per Well



Immobilized Human CD3E&CD3G, His Tag at 2 µg/ml (100 µl/Well) on the plate. Dose response curve for OKT3, mFc Tag with the EC50 of 110.2 ng/ml determined by ELISA (QC Test).

Human CD3E&CD3G, His Tag ELISA

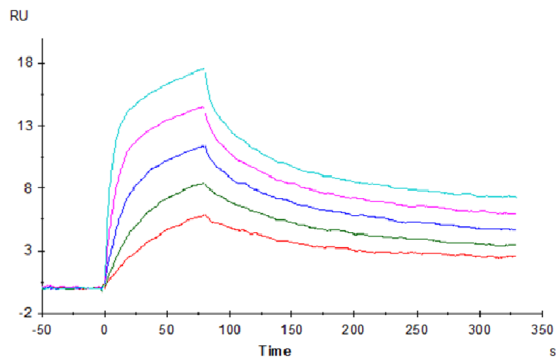
0.2µg Human CD3E&CD3G, His Tag Per Well



Immobilized Human CD3E&CD3G, His Tag at 2 µg/ml (100 µl/Well) on the plate. Dose response curve for Foralumab, hFc Tag with the EC50 of 36.2 ng/ml determined by ELISA.

SPR Data

Assay Data



Human CD3E&CD3G, His Tag captured on CM5 Chip via Anti-His Antibody can bind OKT3, mFc Tag with an affinity constant of 0.22 nM as determined in SPR assay (Biacore T200).